



STAKE POCKET INSTRUCTIONS FOR DODGE RAM 1500, 2500 & 3500

NOTE TO INSTALLER: BEFORE ATTEMPTING TO INSTALL ADARAC RAILS, NYLON BED CAP MUST BE TRIM CUT AROUND STAKE POCKETS TO MAKE ROOM FOR CLAMPING HARDWARE TO FIT INSIDE STAKE POCKETS.

Tools needed: Protective Eyewear, Marking Pencil, Tape Measure and Utility Knife

1 TRIM CUTTING BED CAPS WITH STAKE POCKETS OPEN AND VISIBLE

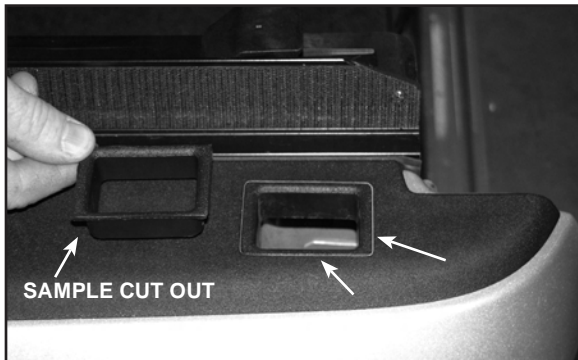


Illustration 1

A. Stake pocket shown at rear requires trim cutting along thin outline in the plastic cap next to steel edge of stake pocket. Illus. 1 shows a stake pocket with plastic cap inside of stake pocket before cutting and removing. Off to the side is a sample piece previously cut out. (Illustration 1)

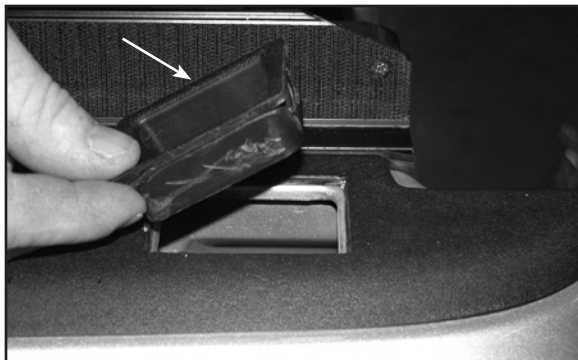


Illustration 2

B. Using utility knife carefully cut on outline around stake pocket and remove plastic piece. (Illustration 2)



Illustration 3

C. Illustration 3 shows how stake pocket appears after excess bed cap material is cut and removed. Repeat procedure for all open stake pockets.

2 TRIM CUTTING BED CAPS WITH STAKE POCKETS HIDDEN

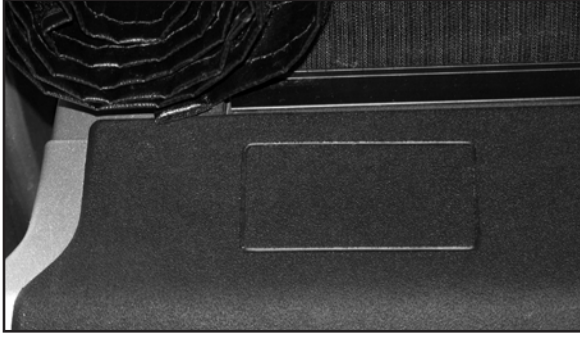


Illustration 4

A. Stake pocket fully covered by bed cap and with a rectangular outline. NOTE that this outline may be larger than actual stake pocket below. BEFORE cutting, a new line will need to be marked on cap. See next step. (Illustration 4)

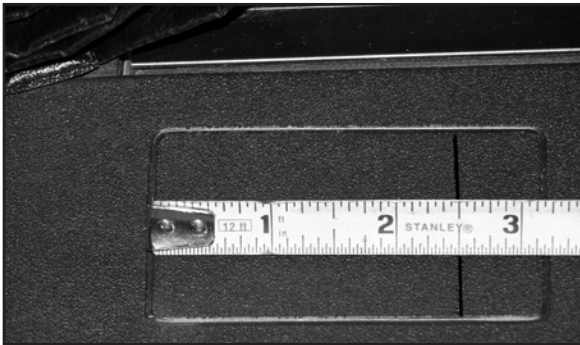


Illustration 5

B. Hook end of tape measure on line closest to front, measure back 2 1/2" and make a mark for the new cut line. (Illustration 5)

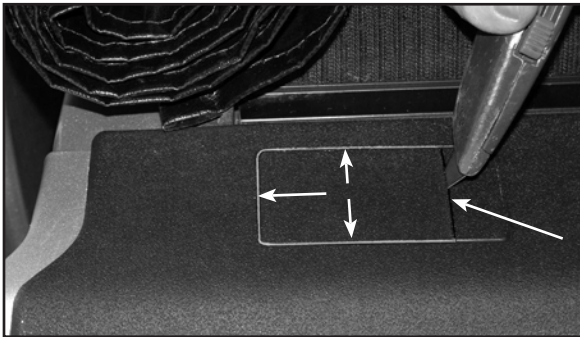


Illustration 6

C. Using utility knife, start cutting on marked line and then go to remaining three lines molded in the bed cap. (Illustration 6)

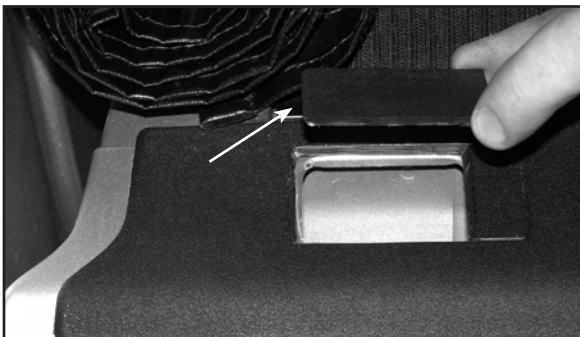


Illustration 7

D. Illustration 7 shows how front stake pocket appears after excess bed cap material is cut and removed. Repeat procedures for stake pockets on opposite side. Refer to ADARAC owner's manual to install truck bed rack system. (Illustration 7)

NOTE: WHEN BED CAPS FULLY COVER STAKE POCKET, IF IN DOUBT ABOUT WHERE STEEL EDGES OF STAKE POCKET ARE, MAKE HOLE NEAR CENTER AREA OF POCKET. THEN MAKE TRIM CUTS BY WORKING OUT TOWARDS EDGES ON ALL 4 SIDES UNTIL FINDING STEEL EDGES OF STAKE POCKET.